

# BROASTER<sup>®</sup>

company

NOTHING ELSE IS REAL BROASTER<sup>™</sup>



## PARTS & ACCESSORIES CATALOG

REVISION DATE APRIL 2023

## TABLE OF CONTENTS

Cleaning Compounds .....	2
BROASTER 1600 Parts & Accessories .....	3
BROASTER 1800 Parts & Accessories .....	3
BROASTER 2400 Parts & Accessories .....	4
BROASTER E-Series Parts & Accessories.....	5
Landing and Dump Tables .....	6
Prep Stations .....	6
BROASTER 620 & 621 Easy Breaders .....	6
Perfect Hold Holding Cabinet .....	7
Marination Tubs .....	7
Oil Caddy .....	7
BROASTER 765 Portable Filter .....	7
Potato Wedgers & Vegetable Slicer .....	8
Refrigerator & Freezer .....	8
Accessory Pans .....	8
Genuine Broaster Chicken® & Broaster Express® Packaging .....	9
Accessory Kits Quick Reference Guide .....	10
Coatings, Batters, Breadings & Seasonings .....	11
Marinades, Mixes, Oils & Dipping Sauces .....	11

Contact your local Authorized Broaster Distributor to place orders for any of the supplies, accessories or condiments within this catalog.

### CLEANING COMPOUNDS - ALL PRESSURE FRYERS



Part Number	Product Description	
96564	Bro Clean	25 lbs.
96589	XL Filtering Compound	22 lbs.
99500	Cooking Well Cleaner & Multipurpose Degreaser	20 lbs.
99501	Cooking Well Cleaner & Multipurpose Degreaser	5 oz.

## PARTS & ACCESSORIES - BROASTER 1600

See Page 10 for a complete listing of accessory kit parts

Part Number	Product Description
07877	Basic Accessory Kit
14527	Complete Start-Up Accessory Kit
11262	3 Tier Clam-Shell Basket
14327	Basket Divider (while supplies last)
10730	Basket
09815	Basket Lifter
10769	Filter Screen
14547	Filter Pan Cover
10762	Filter Pan Hold Down Ring
12791	O-Ring Tool
00846	Fryer Cover O-Ring
09883	Filter Riser Line O-Ring
93313	Oil Caddy (Oil Caddy Hook PN 17848)
17334	Front Glide Kit Contains the glides, tube adapter and hardware for both front feet
09204	Back Wheels



**BROASTER 1600**

## CLEANING & MAINTENANCE SUPPLIES - BROASTER 1600

Part Number	Product Description	Part Number	Product Description
10790	#616/765 Filters 100/case	93624	Cooking Well Cleaner Measuring Cup
10907	Bottom Brush Head	93616	Filtering Media Measuring Cup

## PARTS & ACCESSORIES - BROASTER 1800

See Page 10 for a complete listing of accessory kit parts

Part Number	Product Description
09900	Basic Accessory Kit
14528	Complete Start-Up Accessory Kit
17595	4 Tier Stainless Steel Basket
11261	4 Tier Clam-Shell Basket
09804	Basket
09815	Basket Lifter
10769	Filter Screen
15451	Filter Pan Cover
11310	Filter Pan Hold Down Ring
12791	O-Ring Tool
01556	Fryer Cover O-Ring
09883	Filter Riser Line O-Ring
93313	Oil Caddy (Oil Caddy Hook PN 17848)
17334	Front Glide Kit Contains the glides, tube adapter and hardware for both front feet
09204	Back Wheels



**BROASTER 1800**

## CLEANING & MAINTENANCE SUPPLIES - BROASTER 1800

Part Number	Product Description	Part Number	Product Description
09888	#818 Filters 100/case	12815	Element Brush
15767	Gas Valve Protective Boot	93624	Cooking Well Cleaner Measuring Cup
10907	Bottom Brush Head	93616	Filtering Media Measuring Cup

## PARTS & ACCESSORIES - BROASTER 2400

See Page 10 for a complete listing of accessory kit parts

Part Number	Product Description
15719	Basic Accessory Kit (2400G & 2400E)
15720*	Complete Start-Up Accessory Kit (2400G & 2400E)
16149	Basket
15678	Basket Lifter
15526	Filter Screen
17284	Filter Pan Cover
15704	Filter Pan Hold Down Ring
12791	O-Ring Tool
17016	Long-Life Cover O-Ring
15466	Fryer Cover O-Ring
09883	Filter Riser Line O-Ring
93313	Oil Caddy (Oil Caddy Hook PN 17848)
18000	Front Glide Kit Contains one glide for one front foot. Order 2 per unit.
* While Supplies Last	



**BROASTER 2400**

## CLEANING & MAINTENANCE SUPPLIES - BROASTER 2400

Part Number	Product Description
15495	2400 Filters <span style="float: right;">65/case</span>
15767	Gas Valve Protective Boot
10907	Bottom Brush Head
16281	Element Brush Head
93624	Cooking Well Cleaner Measuring Cup
93616	Filtering Media Measuring Cup

See Page 10 for complete list of accessory kit parts

## PARTS & ACCESSORIES - BROASTER E-Series 18

Part Number	Product Description
09900	Basic Accessory Kit
14528*	Complete Start-Up Accessory Kit
17595	4 Tier Stainless Steel Basket
11261	4 Tier Clam-Shell Basket
09804	Basket
09815	Basket Lifter
21024	Filter Screen
21002	Filter Pan Cover
21021	Filter Pan Hold Down Ring
12791	O-Ring Tool
01556	Fryer Cover O-Ring
21192	Filter Riser Line O-Ring
93313	Oil Caddy (Oil Caddy Hook PN 17848)
18007	Front Casters
09204	Back Wheels
* While Supplies Last	



**BROASTER** *E*SERIES 18

## CLEANING & MAINTENANCE SUPPLIES - BROASTER E-Series 18

Part Number	Product Description	
21177	Filter Paper	100/case
21645	Extended Life Filter Paper	10/case
10907	Bottom Brush Head	
16281	Element Brush Head	
93624	Cooking Well Cleaner Measuring Cup	
93616	Filtering Media Measuring Cup	

## CLEANING COMPOUNDS - ALL PRESSURE FRYERS



Part Number	Product Description	
96564	Bro Clean	25 lbs.
96589	XL Filtering Compound	22 lbs.
99500	Cooking Well Cleaner & Multipurpose Degreaser	20 lbs.
99501	Cooking Well Cleaner & Multipurpose Degreaser	5 oz.

## ACCESSORY EQUIPMENT

### LANDING AND DUMP TABLES



Pans sold separately

4-tray slots to hold 21" x 13" pans (pans not included)

Swivel casters for easy mobility

Dumping Table has 4" wall along top

Overall Dimensions (w x d x h)

Dump: 16-7/8" x 25-5/8" x 39-7/8"

Landing: 16-7/8" x 25-5/8" x 35-7/8"

Part Number	Product Description
85211	Landing Table
85212	Dump Table (includes frame)
10545	Dump Table Top Replacement Frame

### PREP STATIONS



85404 includes tubs

85966 tubs purchased separately

Stainless Steel mobile stations specifically designed to increase productivity and maximize your breadng capacity while minimizing waste.

Overall Dimensions (w x d x h)

85405 - 56-3/4" x 20-3/4" x 54"

11853 - 28-3/4" x 20-3/4" x 54"

85966 - 28-3/4" x 20-3/4" x 36"

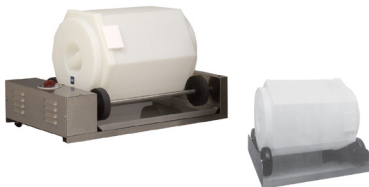
Part Number	Product Description
85405	Extra Crispy High Volume Prep Station (includes tubs)
11853	Basic Prep Station (purchase accessory kit below for tubs)
85966	Extra Crispy Prep Station (purchase accessory kit below for tubs)

### PREP STATION ACCESSORIES



Part Number	Product Description
17109	Extra Crispy Accessory Kit (pictured)
11863	Extension Shelf (add to Basic Prep Station)
11869	12" x 20" Pan Shelf (add to Basic Prep Station)

### BROASTER 620 & 621 EASY BREADERS



Marinates up to 14 pounds of product in 15 minutes

Coats up to 14 pounds of product in 3 minutes

Drum measures 13-1/2" diameter 16-3/8" deep

Overall Dimensions (w x d x h)

620 Base: 15" x 24-5/8" x 5-3/8"

621 Base: 15" x 17" x 4-3/4"

Part Number	Product Description	Voltage
85003	Broaster 621, Manual Easy Breeder	
85302	Broaster 620, Electric Easy Breeder (includes extra drum)	120

Marinate up to 14 pounds of product in 15 minutes!

### BROASTER 620 & 621 EASY BREADERS ACCESSORIES



Part Number	Product Description	
16209	Breader Bags 22" x 26" x 3M	250/case
16210	Marinator Accessory Kit (includes paddle, stopper & bags)	
16208	Marinating Bags 26" x 30" x 3M	250/case

## ACCESSORY EQUIPMENT

### PERFECT HOLD HOLDING CABINET



Adjustable stainless steel angles slides accommodate up to seven 12" x 20" food pans or 18" x 26" sheet pans of 3" centers.

Overall Dimensions (w x d x h)  
22-3/4" x 29-1/2" x 35-1/8"

Part Number	Product Description	Amps/Voltage
93402	Perfect Hold Holding Cabinet	13.9/120

**Keeps chicken fresh during peak periods**

### PERFECT HOLD HOLDING CABINET ACCESSORIES



Part Number	Product Description
16525	Dump Table Accessory for mounting on top of Cabinet (pictured)
16529	Stacking Kit
17732	Pan Support Shelf

### MARINATION TUBS



Large Tub - Marinates up to 52 birds\* at a time

Small - Marinates up to 12 birds\* at a time

\* 8-piece-cut, 2-3/4 to 3 lb. birds

Overall Dimensions (w x d x h)

Large - 28 gal: 21-1/2" x 21-1/2" x 14-7/16"

Small - 5.5 gal: 11-5/16" x 10-1/2" x 14-7/16"

Part Number	Product Description
93171	Marinating Tub with Dolly - 28 gallon capacity
93187	Marinating Tub - 5-1/2 gallon capacity (Qty 6)

### OIL CADDY



Fits easily under any model Broaster Pressure Fryer for safe and convenient disposal of oil.

Overall Dimensions (w x d x h)  
16" x 8-1/2" x 48-3/4"

**Safer way to dispose of used oil**

Part Number	Product Description
93313	Oil Caddy
17848	Oil Caddy Hook

Part Number	Product Description
16492	Wheel Replacement Kit
17144	Handle Kit, Top

### BROASTER 765 PORTABLE FILTER



Second toggle for heater option is no longer available.

Extend oil life with this easily portable and compact oil filter.

(Broaster Pressure Fryers have a built in filtration system.)

Overall Dimensions (w x d x h)  
15" x 30-1/8" x 32-1/4"

Part Number	Product Description	Voltage
85247	Broaster 765 Portable Filter	120
10790	765 Filters	100/case
10769	Filter Screen	
10762	Filter Pan Hold Down Ring	

## ACCESSORY EQUIPMENT

### POTATO WEDGERS & VEGETABLE SLICER



Slice potatoes and other vegetables quickly and easily using the wall mounted or tabletop wedger and slicer.

Overall Dimensions (w x d x h)  
93347 - 10" x 19" x 30"

Part Number	Product Description
96745	Table top unit with 4 section straight cut blade
96746	Wall mount with 4 section straight cut blade
96776	Blade Assembly - 4 cut
96777	Blade Assembly - 8 cut

### REFRIGERATOR & FREEZER



Each feature 6.5 cu ft of space

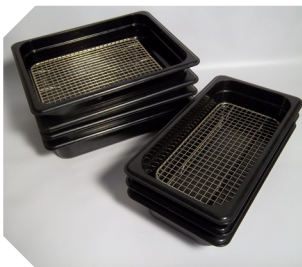
Refrigerator top area holds a 12" x 20" pan and interior rack stores 3, 12" x 20" pans

Freezer has 23-1/4" x 17-1/2" shelves

Overall Dimensions (w x d x h)  
Refrigerator - 27-1/2" x 30" x 43"  
Freezer - 27-1/2" x 30" x 36"

Part Number	Product Description	Voltage
85832	Cold Top Refrigerator	120
93180	Under Counter Freezer	115

### ACCESSORY PANS



Part Number	Product Description
06524	Full Size Pan - Stainless Steel 21" x 13" x 2" deep
14422	Full Size Pan - Stainless Steel 21" x 13" x 4" deep
93158	Full Size Pan - Black Plastic 21" x 13" x 2" deep
14425	Full Size Pan - Black Plastic 21" x 13" x 4" deep
09238	Grate for Full Size Pan
09239	Half Size Pan - Stainless Steel 10" x 13" x 2" deep
09240	Grate for Half Size Pan
93159	Third Size Pan - Black Plastic 10" x 13" x 2" deep



## GENUINE BROASTER CHICKEN® PACKAGING



Part Number	Product Description	
93083	Dinner Box - Genuine Broaster Chicken	250/case
93084	Handle Carton - Genuine Broaster Chicken	125/case
93066	Party Pak - Genuine Broaster Chicken	25/bundle
93082	Snack Box - Genuine Broaster Chicken	250/case
93107	Super Box - Genuine Broaster Chicken	100/case
93590	Tray - 2.5 lb. - Genuine Broaster Chicken	500/case
93307	Wax Paper - Genuine Broaster Chicken	6000/case

## BROASTER EXPRESS® PACKAGING



Part Number	Product Description	
96890	6 lb. White Bag - Broaster Express	500/case
93316	4 oz. Hot Food Container - Broaster Express	1000/case
93377	6 oz. Hot Food Container - Broaster Express	1000/case
93288	16 oz. Hot Food Container - Broaster Express	500/case
93563	Lid for 4 oz. Hot Food Container	1000/case
93510	Lid for 6 oz. & 16 oz. Hot Food Container	1000/case
93312	Dome Lid for 6 oz. & 16 oz. Hot Food Container	1000/case
96748	Small Foil Bags - Broaster Express	1000/case
92086	Medium Foil Bags - Broaster Express	1000/case
92079	Large Foil Bags - Broaster Express	500/case
93593	Dinner Box - Broaster Express	250/case
93591	Snack Box - Broaster Express	250/case
92442	Dispenser Napkin - Broaster Express	3000/case
96716	Prepak with Utensils/Napkin - Broaster Express	250/case
93592	Tray - 2.5 lb. - Broaster Express	500/case
93306	Wax Paper - Broaster Express	6000/case



**Sale of Broaster® Company products and equipment does not give the Operator the right to use Broaster Company's brands, trademarks, logos or point of purchase materials unless a signed, license trademark agreement is on file at Broaster Company.**

**Contact your local Authorized Broaster Distributor to find out how you can become a licensed trademark Operator!**

# ACCESSORY EQUIPMENT

## ACCESSORY KITS QUICK REFERENCE

Part Number	Product Description							
<b>07877</b>	<b>Broaster 1600 Basic Accessory Kit</b>							
Contents:	03865	Drain Bucket	12815	Element Brush	17760	Crumbline Scraper	12791	O-Ring Tool
	00846	Spare O-Ring	14502	Groove Brush	09899	Scouring Pad	09883	O-Ring for Filter Line (2)
	06339	Bottom Brush	17639	Ram Rod			93616	Filter Measuring Cup
	93624	Cleaner Measuring Cup						
<b>09900</b>	<b>Broaster 1800 Basic Accessory Kit</b>							
Contents:	03865	Drain Bucket	12815	Element Brush	17760	Crumbline Scraper	12791	O-Ring Tool
	01556	Spare O-Ring	14502	Groove Brush	09899	Scouring Pad	09883	O-Ring for Filter Line (2)
	06339	Bottom Brush	17639	Ram Rod			93616	Filter Measuring Cup
	93624	Cleaner Measuring Cup						
<b>15719</b>	<b>Broaster 2400 Basic Accessory Kit</b>							
Contents:	03865	Drain Bucket	14502	Groove Brush	09899	Scouring Pad	12791	O-Ring Tool
	15466	Spare O-Ring	17639	Ram Rod	93616	Filter Measuring Cup	09883	O-Ring for Filter Line (2)
	06339	Bottom Brush	17760	Crumbline Scraper			93349	Jersey Lined Glove (2)
	93624	Cleaner Measuring Cup						
<b>14527*</b>	<b>Broaster 1600 Complete Start-Up Accessory Kit</b>							
Contents:	03865	Drain Bucket	09899	Scouring Pad	11850	22 qt. Storage Lid	14506	Marinade Mixing Pitcher
	00846	Spare O-Ring	04258	Serrator	14498	Digital Timer	93097	Prep Bottle Shaker
	06339	Bottom Brush	60000	Poultry Shears	93352	Thermometer	12791	O-Ring Tool
	12815	Element Brush	93616	Filter Measuring Cup	93624	Cleaner Measuring Cup	09883	O-Ring for Filter Line (2)
	14502	Groove Brush	12762	12 qt. Drain Bucket	14500	12 x 18 Cutting Board	93349	Jersey Lined Glove (2)
	17639	Ram Rod	14507	6-1/2 qt. Colander	14501	Sifter		
	17760	Crumbline Scraper	11849	22 qt. Storage Bucket	11283	Breeding Scoop		
<b>14528*</b>	<b>Broaster 1800 Complete Start-Up Accessory Kit</b>							
Contents:	03865	Drain Bucket	09899	Scouring Pad	11850	22 qt. Storage Lid	14506	Marinade Mixing Pitcher
	01556	Spare O-Ring	04258	Serrator	14498	Digital Timer	93097	Prep Bottle Shaker
	06339	Bottom Brush	60000	Poultry Shears	93352	Thermometer	12791	O-Ring Tool
	12815	Element Brush	93616	Filter Measuring Cup	93624	Cleaner Measuring Cup	09883	O-Ring for Filter Line (2)
	14502	Groove Brush	12762	12 qt. Drain Bucket	14500	12 x 18 Cutting Board	93349	Jersey Lined Glove (2)
	17639	Ram Rod	14507	6-1/2 qt. Colander	14501	Sifter		
	17760	Crumbline Scraper	11849	22 qt. Storage Bucket	11283	Breeding Scoop		
<b>15720*</b>	<b>Broaster 2400 Complete Start-Up Accessory Kit</b>							
Contents:	03865	Drain Bucket	09899	Scouring Pad	11850	22 qt. Storage Lid	93097	Prep Bottle Shaker
	15466	Spare O-Ring	04258	Serrator	14498	Digital Timer	12791	O-Ring Tool
	06339	Bottom Brush	60000	Poultry Shears	93352	Thermometer	09883	O-Ring for Filter Line (2)
	14502	Groove Brush	93624	Cleaner Measuring Cup	14500	12 x 18 Cutting Board	93349	Jersey Lined Glove (2)
	17639	Ram Rod	12762	12 qt. Drain Bucket	14501	Sifter		
	17760	Crumbline Scraper	14507	6-1/2 qt. Colander	11283	Breeding Scoop		
	93616	Filter Measuring Cup	11849	22 qt. Storage Bucket	14506	Marinade Mixing Pitcher		
<b>16210</b>	<b>Broaster 620 Marinator Accessory Kit</b>							
Contents:	11146	Stopper & Holder Assembly	16195	Stirring Paddle	16208	Bags 26 x 30, 250 count	16211	Instructions for Marinator

Broaster Company reserves the right to temporarily substitute like items or remove any items from the above listed kits if supply chain outages affect Broaster Company's ability to ship kits complete with your fryer purchase. Prices will be adjusted accordingly for any items that are removed.

\* While Supplies Last

Available  
Cleaning  
Brushes

Mini-Groove Brush  
Part Number: 14502



Bottom Brush  
Part Number: 06339



Drain Valve Brush  
Part Number: 17638



Crumbline Scraper  
Part Number: 17760



## CONDIMENTS



### COATINGS

Part Number	Product Description	Used with
96543	Coat-N-Fry Coating - 40 lb. case	Fresh Potatoes
95012	Extra Crispy Slo-Bro® Coating - 40 lb. case	Crispy Chicken
96501	Fish & Chips Batter - 40 lb. case	Fresh Fish, Vegetables
96635	Slo-Bro Coating - 40 lb. case	Genuine Broaster Chicken
96403	Slo-Bro Extra Spicy Coating - 20 lb. case	Pre-marinated chicken for Genuine Broaster Chicken Spicy
95208	Slo-Bro TENDER Coating - 40 lb. case	Genuine Broaster Chicken Tenders
96510	Prep Seasoning - 8 lb. case	All Purpose seasoning



Ask about our recipe booklet that shows how to make pork chops, extra crispy chicken, turkey, rotisserie style chicken and fresh vegetables in your Broaster Pressure Fryer!

### MARINADES

Part Number	Product Description	Used with
96636	Chickite® Marinade - 30 lb. case	Genuine Broaster Chicken
95211	Chickite® TENDER Marinade - 30 lb. case	Genuine Broaster Chicken Tenders
96505	Ribite® Marinade - 30 lb. case	Pork Chops, Ribs, etc.
96504	Supreme Marinade - 30 lb. case	Genuine Broaster Chicken, or Genuine Broaster Chicken Tenders alternate



### OILS & DIPPING SAUCES

Part Number	Product Description
96595	Canola Oil
95082	Canola/Soybean Blend
95179	BBQ Dipping Sauce - Portion Packs
95182	Buffalo Dipping Sauce - Portion Packs
95180	Honey Mustard Dipping Sauce - Portion Packs
95181	Ranch Dipping Sauce - Portion Packs
93585	Sauce Rack - 6 column



Broaster Foods Cooking Oils are specially formulated for high quality flavor and extended oil life when used with XL filtering compound.

Contact your local Authorized Broaster Distributor to place orders for any of the supplies, accessories or condiments within this catalog.

# BROASTER<sup>®</sup>

company

NOTHING ELSE IS REAL BROASTER™

## One Source Success

With over 60 years of experience and thousands of operators worldwide, no one understands your needs better than Broaster<sup>®</sup> Company.

Broaster Company supplies you with everything you need, from high-quality equipment and supplies, to easy, proven recipes for producing the world's best-tasting chicken and other Broaster Foods<sup>®</sup>.

Whether you use Genuine Broaster Chicken<sup>®</sup>, our line of ready-to-cook frozen products or our full line of breadings and marinades with your own fresh chicken, our time-proven process will allow you to create great-tasting foods that your customers will come back for again and again.

And, as a licensed trademark operator, you get the advantages of a franchised operation without the fees and royalty payments.

With our no-fee licensing programs, your profits stay where they belong ... in your store!

Broaster Company | 2855 Cranston Road, Beloit, WI 53511-3991 USA | 1.800.365.8278 | 1.608.365.0193 | [broaster.com](http://broaster.com)

Broaster<sup>®</sup>, Broasted<sup>®</sup>, Broaster Chicken<sup>®</sup>, Broaster Foods<sup>®</sup> and Broasterie<sup>®</sup> are registered trademarks of Broaster Company. Genuine Broaster Chicken<sup>®</sup> and Broaster Express<sup>®</sup> are also trademarks of Broaster Company. Use of Broaster Company trademarks is permitted ONLY by licensed trademark operators